



WORK & STUDY

TORONTO • CALGARY



INTERNATIONAL HOUSE
SOL GROUP OF SCHOOLS





TORONTO



CALGARY

For the most up-to-date fees for all of our work and study programs please visit: www.sol-group.net/fees
For more information on our study programs please visit: www.sol-group.net/esl

WORK EXPERIENCE IN CANADA

All IH schools in Canada offer an extensive choice of work related programs. These programs are designed to take your language skills beyond the classroom. By tailoring these programs to suit a variety of needs, we can help place you in a professional setting where you will gain an incredible career enhancing experience, or help place you in a paying job related to your English studies at International House.

All of our work related programs require a study period at the schools. A minimum level of English is required for all work placements and the duration of your studies will depend on the type of job and the duration of your stay.

Generally, the higher your command of the English language, the better your position will be within the companies that will hire you. You will also be more likely to move up to better positions and, of course, get better pay. Regardless of which program you are interested in, you will always be required to enrol and study at International House for a minimum of 4 weeks and up to 24 weeks if necessary as part of your work program. This will ensure that you are ready and confident to work in your new job. For many of the programs, a study portion equal to the work portion is required by Citizenship and Immigration Canada for issuance of your work permit.



Chart 1 - APPROXIMATE LEVEL REQUIREMENTS - COMPARISON CHART

PROGRAM	Work & Travel	CareerConnect	Professional Internship	RanchStay	Work & Study 6 months	Work & Study 9 months	Work & Study 12 months
TOEFL score	29 (CBT 90+)	65 (CBT 180+)		29 (CBT 90+)	45 (CBT 133+)	29 (CBT 90+)	29 (CBT 90+)
TOEIC score	500	700		500	600	500	500
Cambridge ESOL	PET	FCE		PET	PET	PET	PET
IH LEVELS	Mid Intermediate	Mid Intermediate	CareerConnect™ Completion	Pre Intermediate	Pre to Mid Intermediate	Mid Intermediate	Mid Intermediate

PROFESSIONAL INTERNSHIPS

Students with a professional background and a minimum of high-intermediate level of English can take part in the Professional Internship Program. Based on your work experience and education, you will be placed in a local company within the large network of our business partners. You will learn from the experts, practice your English with native speakers, learn industry-related jargon, and gain the experience and confidence you will need for future jobs in your field.

To ensure we have the appropriate flexibility to place you according to your interests and qualifications, all Professional Internship placements are unpaid positions.

As a candidate of the Professional Internship Program, you must complete the CareerConnect™ Program and meet level requirements that suit the position for which you are applying.

The quality and level of your placement will depend on your experience, education, language skills, area of placement, time of year and duration of your placement.

Visa requirement



For this program you need to:

- be 21 years of age or more
- have education or experience in the applied field
- study at least 4 weeks in CareerConnect™
- possess the proper visa

The Program Includes

- industry specific consultation with your supervisor
- interview with a potential host organization
- guaranteed placement in your area of choice
- placement orientation after arrival
- certificate of completion of course and work
- ongoing service throughout your work period

What is CareerConnect™

Your knowledge of Business English is one of the most important aspects of your internship placement. The higher your language skills, the more options you will have for a placement. The CareerConnect™ teaching curriculum is specifically designed to teach you language skills required to succeed in your place of work as quickly and efficiently as possible.

Program Duration

In line with all other programs offered at International House, CareerConnect™ is designed to offer students the most amount of flexibility possible. You can start CareerConnect™ every Monday and take it for as little as 4 weeks and as long as 24 weeks. Students requiring a C-30 Visa for their internship placement will be required to study and work on a 50-50 basis.

Please check www.sol-group.net/work for a list of Internships available

RANCHSTAY - PRAIRIES

If you like the country life, tractors, horses, cattle and fresh air, and want to experience the great wide open, then our Ranch Stay Program is for you! Experience the vast openness of Canadian Marlboro country and live with a ranching family to learn their way of life.

RanchStay is for the cowboy/cowgirl at heart looking to spend some time on a ranch or farm away from all the bright lights of the big city. RanchStay is for people looking to learn something about the community they are placed in and farming in general. Most placements are with small family run farms located 1 - 5 hours from a city; you will pay a weekly fee to stay on the farm and will not be paid. You are not required to work, but are expected to help out with chores around the house and the farm like any member of the family.

Visa requirement



For this program you need to:

- be 18 to 30 years of age
- study 4 to 24 weeks at IH Calgary
- be physically fit and have no allergies
- be prepared to live in a small, remote community
- bring with you sturdy outdoor clothing
- have an intermediate level of English

The Program Includes

- Interview(s) prior to arrival in Canada if required
- Assistance with arranging itinerary to the farm
- Farm profile prior to arrival in Canada.

You can choose from

- Horse breeding or horse training Farm/Ranch
- Guest Ranch (April to October only)
- Vineyards
- Cattle Ranch
- Sheep/Grain Farm
- Alpaca Farm
- Mixed Farm



The Work & Study Program is the ultimate way to work and improve your English skills in paid positions in major cities or resort towns across Canada.

All students applying for this program will have to take part in the Business English for Hospitality and Retail Industry at one of the International House schools on a 50-50 basis with their paid internship program. Taking part in this program will qualify you for obtaining a C-30 Visa.

Positions are offered in hotels, resorts and a variety of retail stores and restaurants in cities or other popular tourist destinations across Canada.

Although the positions offered are paid, they are not industry specific and of the same calibre of positions offered in the Professional Internship Program. Again, the quality and level of your placement is heavily dependant on your language skills and past work experience.

Visa requirement



For this program you need to:

- be 18 to 30 years of age
- study period at IH as indicated in Chart 2
- be willing to work in entry positions
- be motivated to learn and work hard

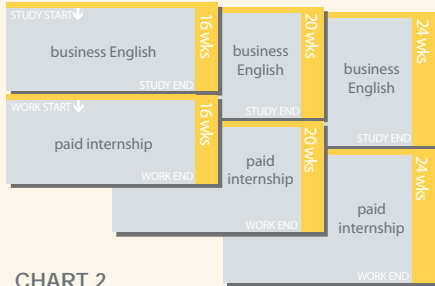


BUSINESS ENGLISH for the Hospitality and Retail Industry (BERI)

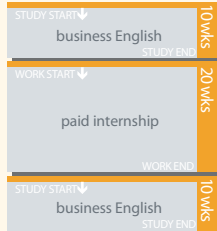
The Business English for the Hospitality and Retail Industry (or BERI) is specifically designed to help speakers of other languages gain a working command of the English language, quickly and efficiently. The program emphasizes on getting students ready to serve in the retail and hospitality industries using English. The material prepared and taught everyday give students the tools they need to help prepare for their placement. The program is divided into two segments: an in-class component, which makes up 50% of the program and a hands-on portion which consists of a paid internship within one of our many partner local businesses, whether be it one of our retail partners or one of the many beautiful resorts and hotels in the Rockies or Whistler.

The Work and Study Program is offered in three variations to suit various travel plans and schedules: Straight, Sandwich or Integrated. Please see the charts below to choose what best fits your plans. Please visit our website for start dates on all resort related positions.

straight courses



sandwich courses



integrated courses



CHART 2

*Students are required to attend evening classes at International House (15 hours per week) throughout the Integrated work placement.



WORK & TRAVEL PROGRAMS

The Work and Travel Program is designed for candidates interested in spending time in Canada working and seeing the country. This program will give you exposure to the work culture of North America and allow you to gain an income while learning the culture and language.

Although a high level of English is not a prerequisite, all candidates are required to study at International House for a minimum period of 4 weeks. Upon completion of your studies, you will be placed in a paid position.

The main difference between this program and the Work and Study program is the visa requirement. Students wanting to take part in this program **MUST** already possess an appropriate visa that will allow them to work in Canada.

This program will not qualify you for a C-30 visa because it does not require a 50% study period.

Visa requirement



For this program you need to:

- be 18 to 30 years of age
- study 4 to 24 weeks at one of the schools
- must possess a working command of English
- must possess an eligible work visa to participate



HOSPITALITY

Work in top hotels and resorts in world famous locations including Banff, Whistler, or Vancouver Island. Positions available will depend on your previous experience and level of English.

RETAIL INDUSTRY

A wide variety of positions are offered in major department stores in Calgary, Toronto and Vancouver. Experience working in Canada's retail and customer service industry in one of these exciting metropolitans.

RESTAURANTS

Positions in fast-paced restaurants, cafés, bars and other food related industries will not only give you the chance to learn the North American culture of the food industry, but it is a great way to learn English!

ADDITIONAL INFORMATION

Positions in the retail industry will give you the chance to deal one-on-one with English speakers as you learn the skills to assist and interact with customers.

Retail positions include retails assistants, sales staff, merchandising staff or customer service representative. Your position will depend heavily on your English level and previous experience in the industry.

ADDITIONAL INFORMATION

For those wanting to further their experiences working in a Canadian restaurant environment, placements in restaurants, bars and a variety of cafés and pubs are offered with the Work & Travel and Work & Study Programs.

These positions include café assistant, café server, kitchen staff and restaurant & bar staff. Positions pay anywhere from \$8.00 to \$12.00 per hour and may include tips.

ADDITIONAL INFORMATION

Most of the positions in the hospitality industry are in hotels and resorts in Canada's tourism communities. Positions include Front of House, Back of House, Food & Beverage, Kitchen, Maintenance, Guest Services, and Retail and are paid starting at \$8.00 and up, on average for 30 to 35 hours per week depending on workload.

Staff accommodation placement is included with your placement. Share a room with 1 or 2 others at or near your place of employment. Housing costs range from \$300 to \$550 a month. Please contact us for more information.

Cost of travel to the hotel or resort is not included and costs range from \$20 to \$200 and take anywhere from 2 to 14 hours depending on where you will be to.

2009 FEES & SERVICES

RELATED FEES - TORONTO & CALGARY

Service	Fees	Service	Fees
Registration Fee	\$100.00	Placement Fee - All work programs	\$1200.00
Accommodation Placement Fee	\$195.00	Weekly RanchStay fee	\$50.00
Airport Reception - One-way / Two-way	\$100.00 / \$175.00	Health Insurance (min. 2 weeks)	\$2.00 / day

*Material fees for all ESL and Junior Programs are included in the tuition fees listed above.

ADULT ENGLISH LANGUAGE PROGRAMS

Program	Classes per day	Toronto	Calgary
Intensive (C-110)	4 classes of 75 minutes each	\$310.00/wk	\$280.00/wk
Semi-Intensive Plus (C-80)	3 classes of 75 minutes each	\$250.00/wk	\$220.00/wk
Business English for Hospitality & Retail	4 classes of 75 minutes each	\$310.00/wk	\$280.00/wk
CareerConnect™	4 classes of 75 minutes each	\$310.00/wk	\$280.00/wk

A 5% discount is applied to tuition fees of 16 weeks or longer if all tuition fees are paid at once. Students who choose to pay monthly or weekly will NOT qualify for this discount.

ACCOMMODATIONS**

Type	Daily meals	Nightly - Toronto	Weekly - Toronto	Nightly - Calgary	Weekly - Calgary
IH Toronto Student House	No meals	\$35.00	\$210.00	NA	NA
Homestay with a family	Full Board	\$35.00	\$210.00	\$30.00	\$185.00
Residential options	Check www.sol-group.net/housing for more details on options, pricing and availability.				

**IHT Student House bookings are on a first come first serve basis and not guaranteed. Other accommodations such as hotels and youth hostels are available upon request. Please contact us for fees. We can not guarantee your preferred accommodations. Please contact us for more information on dormitories and residences. Students working in Resorts or hotels may arrange to live in staff housing. Please contact us for more information on these options. Prices and availability is dependant on time of travel and the various resorts and hotels.



VISA REQUIREMENTS

All students and candidates for our programs are required to have the proper immigration documentation for entering and staying in Canada. Citizenship and Immigration Canada (www.cic.gc.ca) issues a variety of visas to nationals of certain countries. It is best to check with the Canadian Embassy or Consulate responsible for nationals of your country for the latest information and requirements before making your travel plans. You can also email us or one of our authorized agencies for more information. Below is a list of the most common visas available for study and work purposes in Canada.

open working holiday visas



Working holiday visas are issued to nationals of a handful of countries on an exchange basis. Some of these countries include: Japan, Germany, Netherlands, France, Sweden, Italy, South Korea, Norway, Czech Republic and Latvia. There are age restrictions on these visas and they are issued only once in your life.

student work abroad visas (SWAP)



This visa is restricted to students and numbers are limited. You will have to enrol with a SWAP representative in your region if nationals of your country are eligible. Please check www.swap.ca for more details on this program.

visitor visa



Only for programs with no work/internship or other practical component. You may need to apply for a Temporary Resident Visa (TRV) unless you are permitted to stay in Canada for up to 6 months with a stamp in your passport upon arrival at the Canadian border.

C-30 visas



This is for programs that include both study as well as a work component. You will need both a student and working authorization. All of our programs using C-30 visas are a minimum of 32 weeks in duration and combine 50% study combined with 50% internship/work.

the young workers exchange visa



Only open to specific countries. You must have a placement secured before you apply for the visa and you cannot change your employer. Some of the countries include: Germany, Netherlands, Finland, Switzerland, France and Austria.

study permit



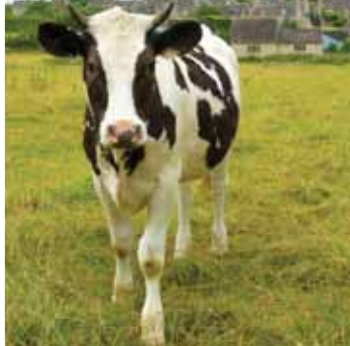
Nationals of some countries need to apply to study in Canada regardless of duration. Many nationals can study in Canada for a six month period without a study permit. You will need a study permit along with a work permit to take part in any work & study programs that lasts more than 6 months.

International House is unable to offer assistance with visa applications. We will only provide you with a Letter of Acceptance and/or Invitation Letter to accompany your visa application to the embassy or consulate.



International House Toronto
469 Jarvis Street
Toronto, Ontario
M4Y 2G8, Canada

T: 1-416-322-3405
E: info@sol-group.net



International House Calgary
1009 - 7th Avenue SW
Calgary, Alberta
T2P 1A8, Canada

T: 1-403-233-0033
E: info@sol-group.net



WORK & STUDY